

10 – 50 scfm

D SERIES

Non-Cycling

REFRIGERATED COMPRESSED AIR DRYERS

These refrigerated dryers have been specially engineered to be used with 2.5HP – 10HP air compressors. They have enhanced heat exchangers for maximum efficiency and reliable refrigeration systems that include oversized condensers - designed specifically for these dryer models.

Moisture and contaminants are efficiently separated from the airstream through a centrifugal separator and are then removed with a reliable float-type drain or optional timed electric solenoid drain.

The optional Compustat™ microprocessor dryer control provides performance adjustment, and dryer and air system monitoring capability, and includes remote alarm relays.

These dryers are fully assembled and require only compressed air and utility hookup for installation.

NCD non-cycling dryers provide:

- **Low pressure drop - 5 psi or lower**
- **Compact size**
- **Reliable operation**
- **Long service life**
- **Durable powder-coated finish**
- **ZEKS warranty coverage***



24 NCD Model Shown

STANDARD AND OPTIONAL FEATURES

MODEL	10NCD	18NCD	24NCD	35NCD	50NCD
Refrig Suction Pressure Gauge	S	S	S	S	S
Drain Trap	S	S	S	S	S
ON/OFF Switch	1	1	1	S	S
Power Light	-	-	-	S	S
Fahrenheit/Celsius Display	-	-	-	1	1
Dew Point Temp Display	-	-	-	1	1
Remote Alarm	-	-	-	1	1
Timed Solenoid Drain (Dial Control)	O	O	O	O	O
Cleanable Ambient Air Filter	O	O	O	O	O
NEMA 4 and 12 Electrics	-	-	-	O	O
Low Ambient Enclosure	-	-	-	O	O

S – Standard Feature

O – Optional Feature

1 – With Compustat™ Controller

- - Not Available



Compustat™ Digital Controller

Microprocessor provides digital display of multiple dryer conditions including dew point temperature. Alarm conditions are adjustable and remote alarm relays are provided.

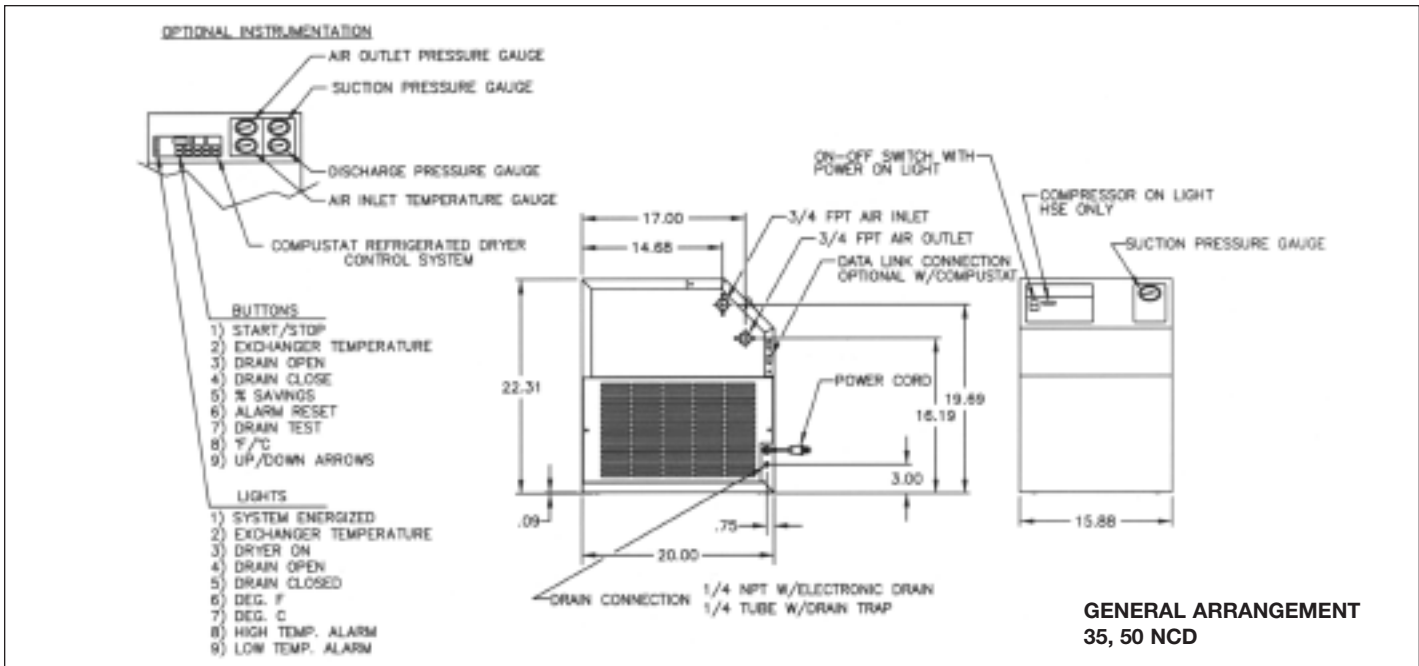
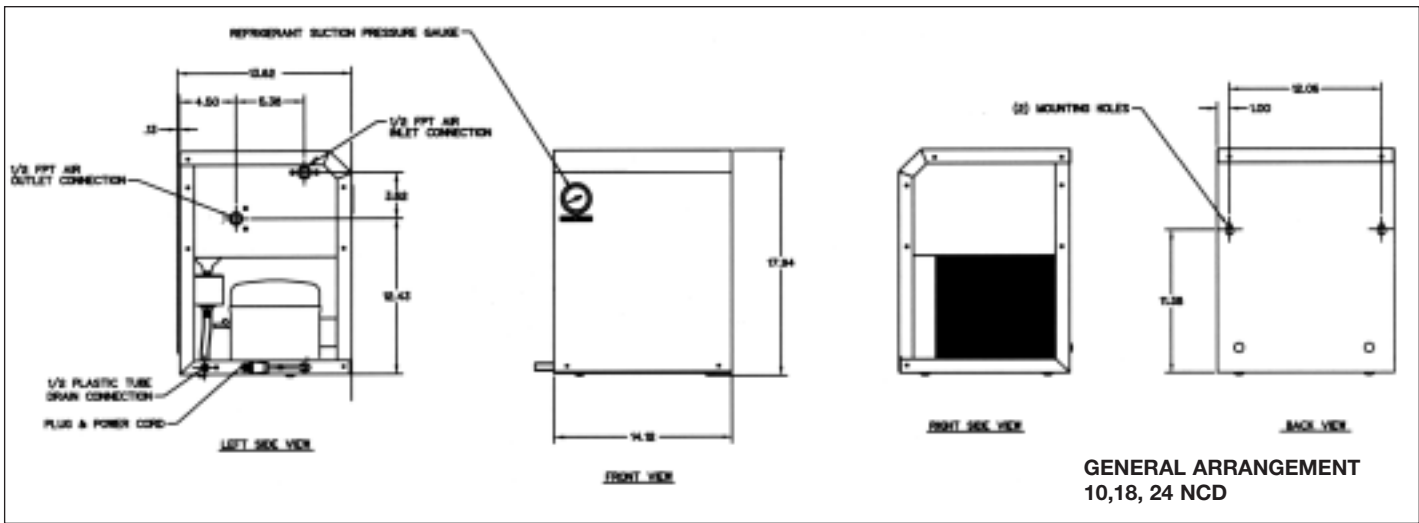
Timed Solenoid Drain

This drain provides adjustable drain timing that can be set to accommodate ambient conditions. Dial control on sloped front panel or control through optional Compustat™ controller on 35 - 50 NCD models.

Ambient Air Filter

Cleanable, reusable filter protects refrigeration system condenser from becoming fouled.

* See ZEKs' Warranty Policy for complete Warranty description



SPECIFICATION AND SELECTION CHART

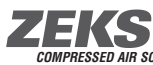
MODEL	10NCD	18NCD	24NCD	35NCD	50NCD
38°F/3.3°C PDP; scfm*	10	18	24	35	50
50°F/10°C PDP; scfm*	14	25	33	48	69
Width in.	14	14	14	16	16
Depth in.	14	14	14	20	20
Height in.	18	18	18	23	23
Shipping Weight lb.	70	70	70	105	120
Air Connection In/Out	1/2" FPT	1/2" FPT	1/2" FPT	3/4" FPT	3/4" FPT
Condensate Drain	1/8" FPT	1/8" FPT	1/8" FPT	1/8" FPT	1/8" FPT
Refrig. Comp. HP	.2	.2	.4	.4	.7
Max. Work. Press. psig	250***	250***	250***	250***	250***
Operating KW**	.41	.41	.69	.78	1.02
Voltages	115-1-60 220-1-50	115-1-60 220-1-50	115-1-60 220-1-50	115-1-60 220-1-50	115-1-60 220-1-50

R22 refrigerant is used in all models.

* Performance data obtained and presented in accordance with CAGI Standard No. ADF 100. Pressure dew point (PDP) at 100 psig, 100°F (37.8°C) inlet air, 100°F (37.8°C) ambient air (tested in actual conditions).

** Average kilowatts per hour of dryer operation at full rated capacity. Operating kilowatt values reflect air-cooled models.

*** Maximum Working Pressure is limited to drain rating (250 psig).



COMPRESSED AIR SOLUTIONS™
1302 Goshen Parkway, West Chester, PA 19380
610-692-9100 800-888-2323 Fax 610-692-9192
www.zeks.com

NCD 10-50-1001-5M-DBO

Specifications, illustrative materials and descriptions contained herein were as accurate as known at the time this publication was approved for printing. The company reserves the right to change specifications, discontinue models, equipment or design without notice and without incurring obligation. The information set out in this brochure is for preliminary information only and is not intended to constitute any representation or warranty by ZEKs to potential customers or to form the basis of a contract with any customer.